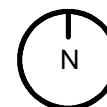


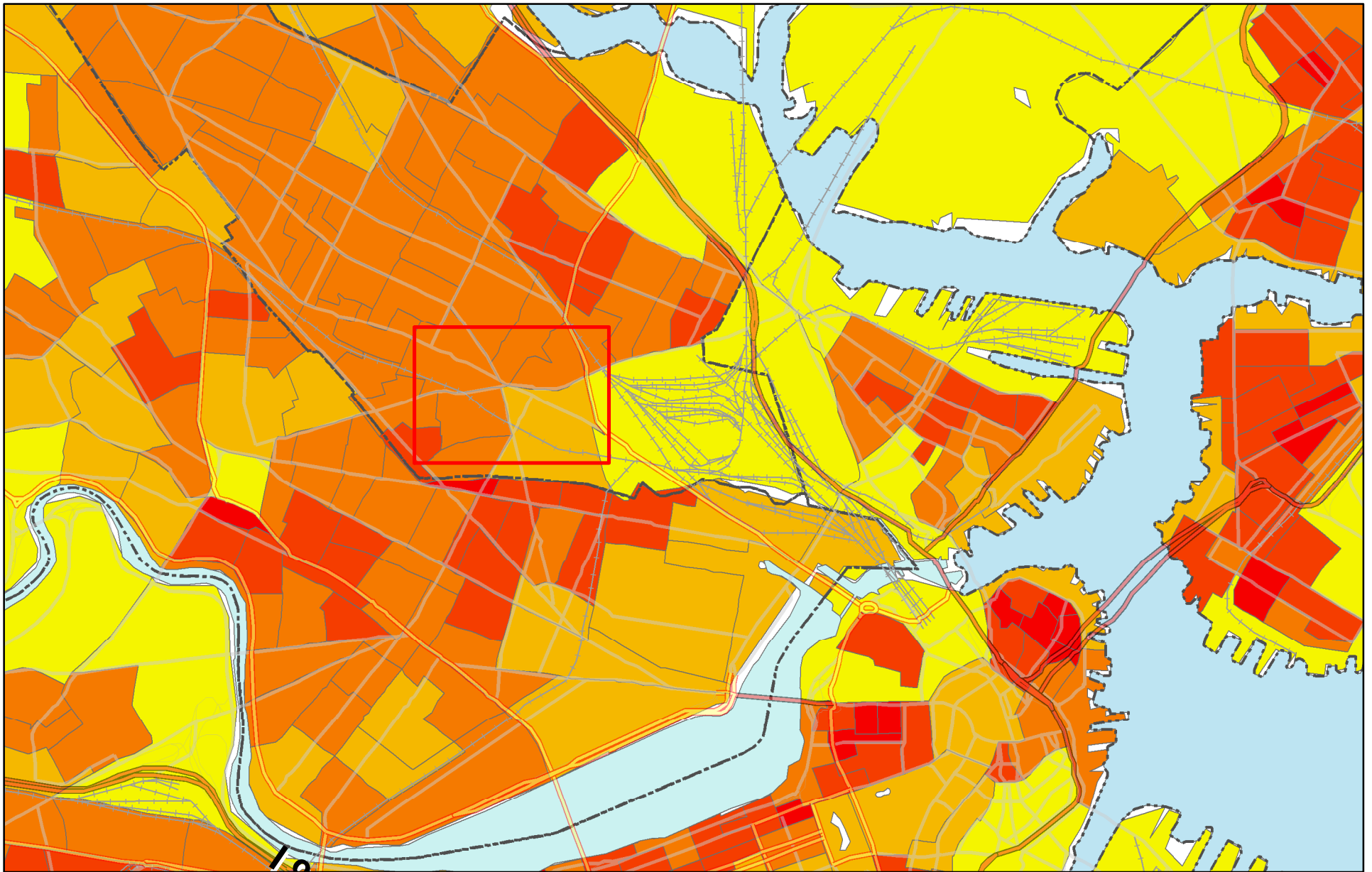
Union Square -- Transit Ready

1 Mile

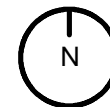
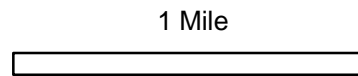


Map by Paul Cote, 2006
 Street data: ESRI Streetmap, 2002
 MBTA data, MBTA, 2004

Union Square is an urban node with great potential. It is just two miles from downtown Boston, a mile from Harvard and a short distance to Logan Airport. It is at the junction of several of the major arterials of Somerville. Yet one of the most striking features of the square is what it is lacking: it is at the center of a void in the MBTA's light rail network. Union Square lies approximately one and a half miles from the nearest stops on the Red-Line and the Orange Line and the end of the Green Line, Lechemere Station.



Population Density (Blockgroup)

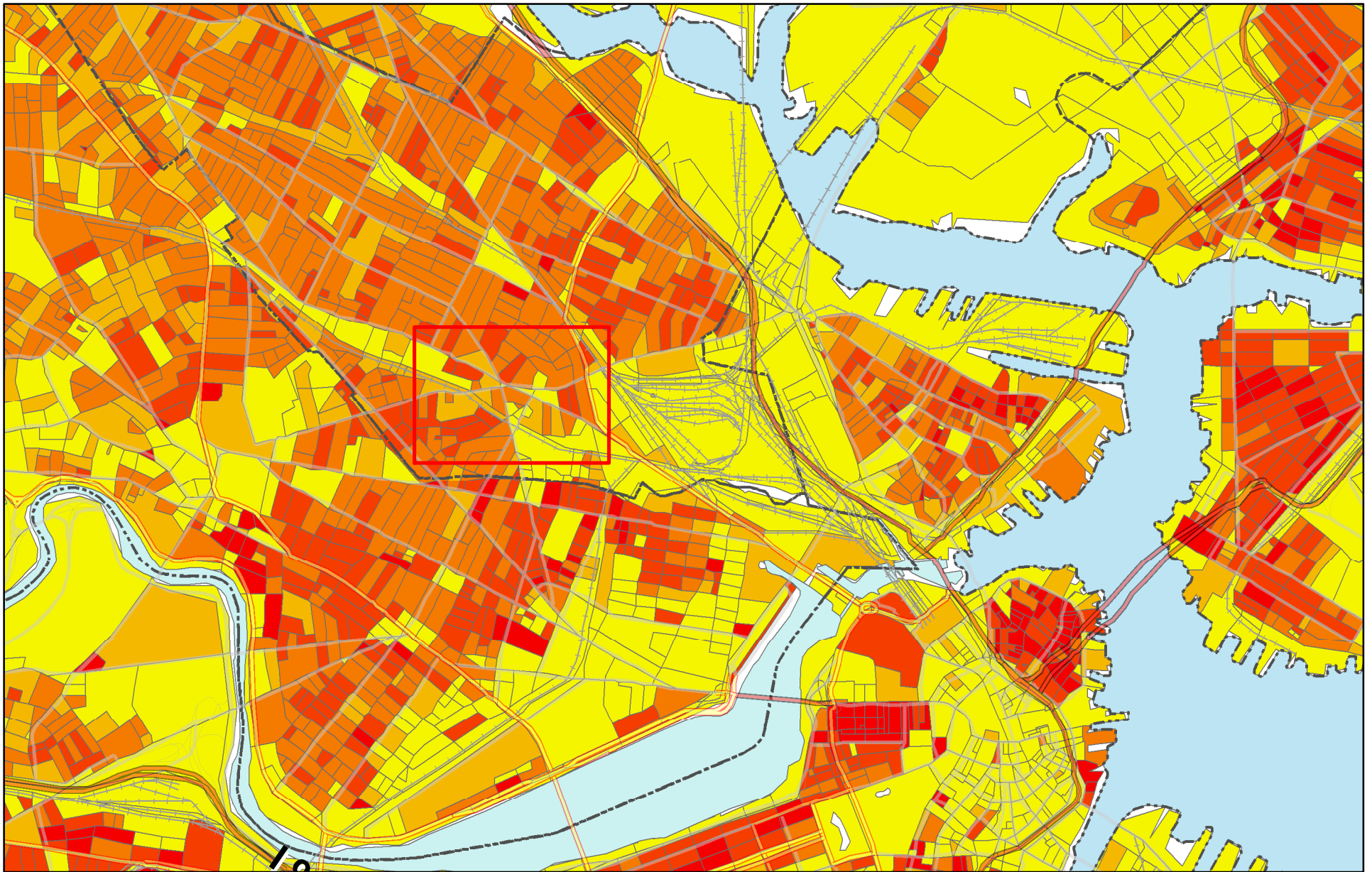


Map by Paul Cote, 2006
 Street data: ESRI Streetmap, 2002
 2000 US Census Blockgroups: Geolytics Inc.

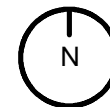
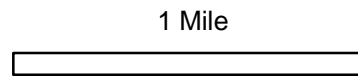
Persons per Acre



Union Square does not seem to be distinct from its neighbors in terms of population density when examined at the blockgroup level of aggregation. This map does reveal, however an interesting area of higher population density a short distance to the south, just south of the Cambridge boundary, along Cambridge street. Although these people live a short distance to Union Square, their walking distance is much greater owing to the railroad tracks.

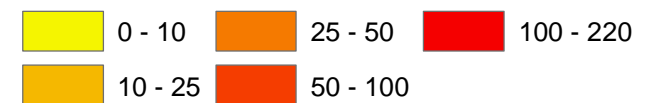


Population Density (Block)



Map by Paul Cote, 2006
 Street data: ESRI Streetmap, 2002
 2000 US Census Blockgroups: Geolytics Inc.

Persons per Acre



Examining population density from a block level of aggregation reveals a different pattern of population density. Now we can see that there are indeed places in union square that do have relatively high densities. This effect illustrates a common map fallacy of map interpretation known as the Modifiable Aerial Unit Problem.