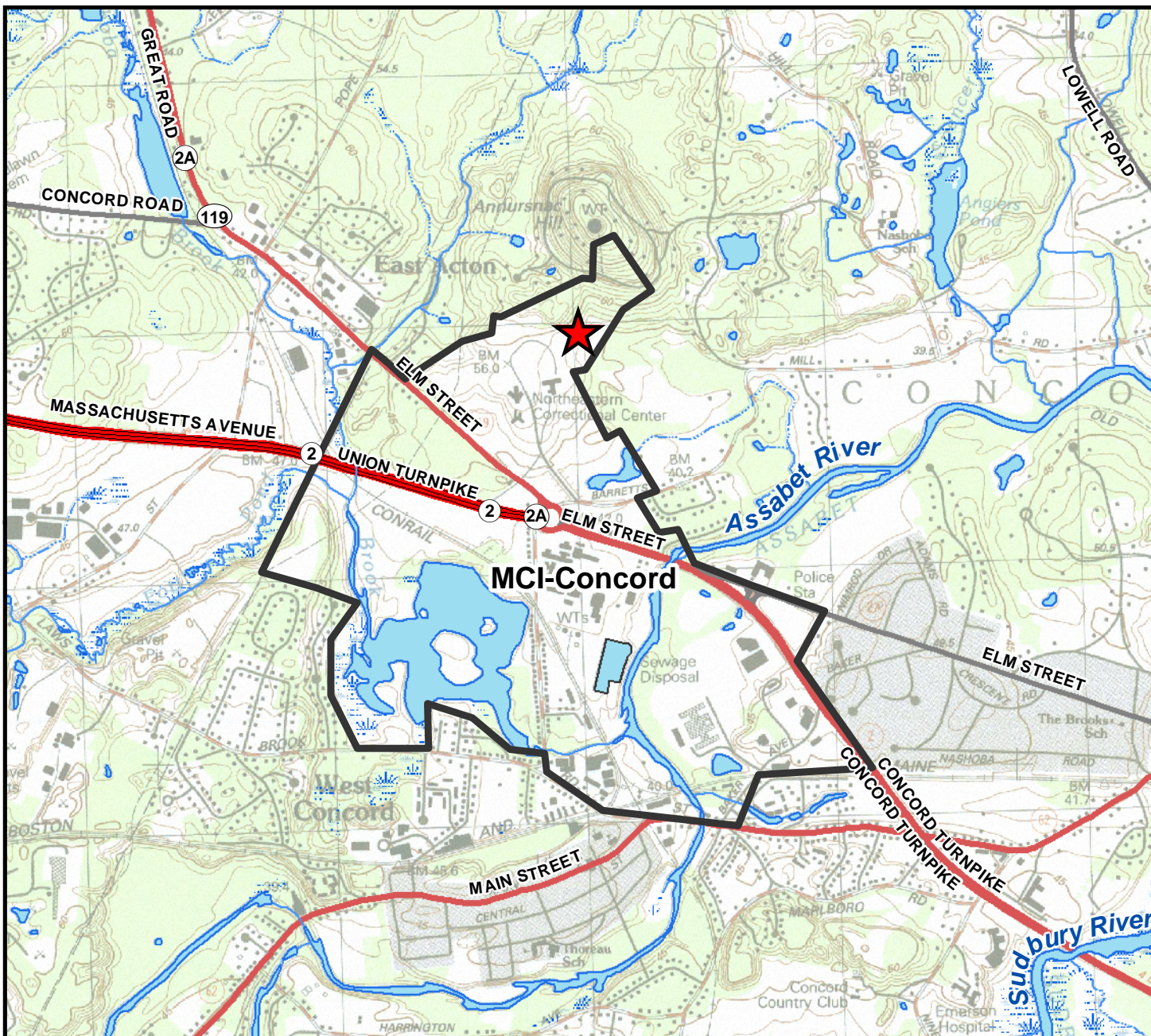


Site Context

The project site is approximately 2 hectares surrounding a point assigned to me for this studio project. The project site is in West Concord, Massachusetts in the northern portion of the studio site boundary, north from the rotary for Route 2 and Elm Street on Massachusetts Correctional Institution (MCI) property.



Jean-Paul Charboneau

Mapping Assignment
Planning and Design of Landscapes Studio
Harvard Graduate School of Design
September 2007



Assigned Project Point



Studio Study Area

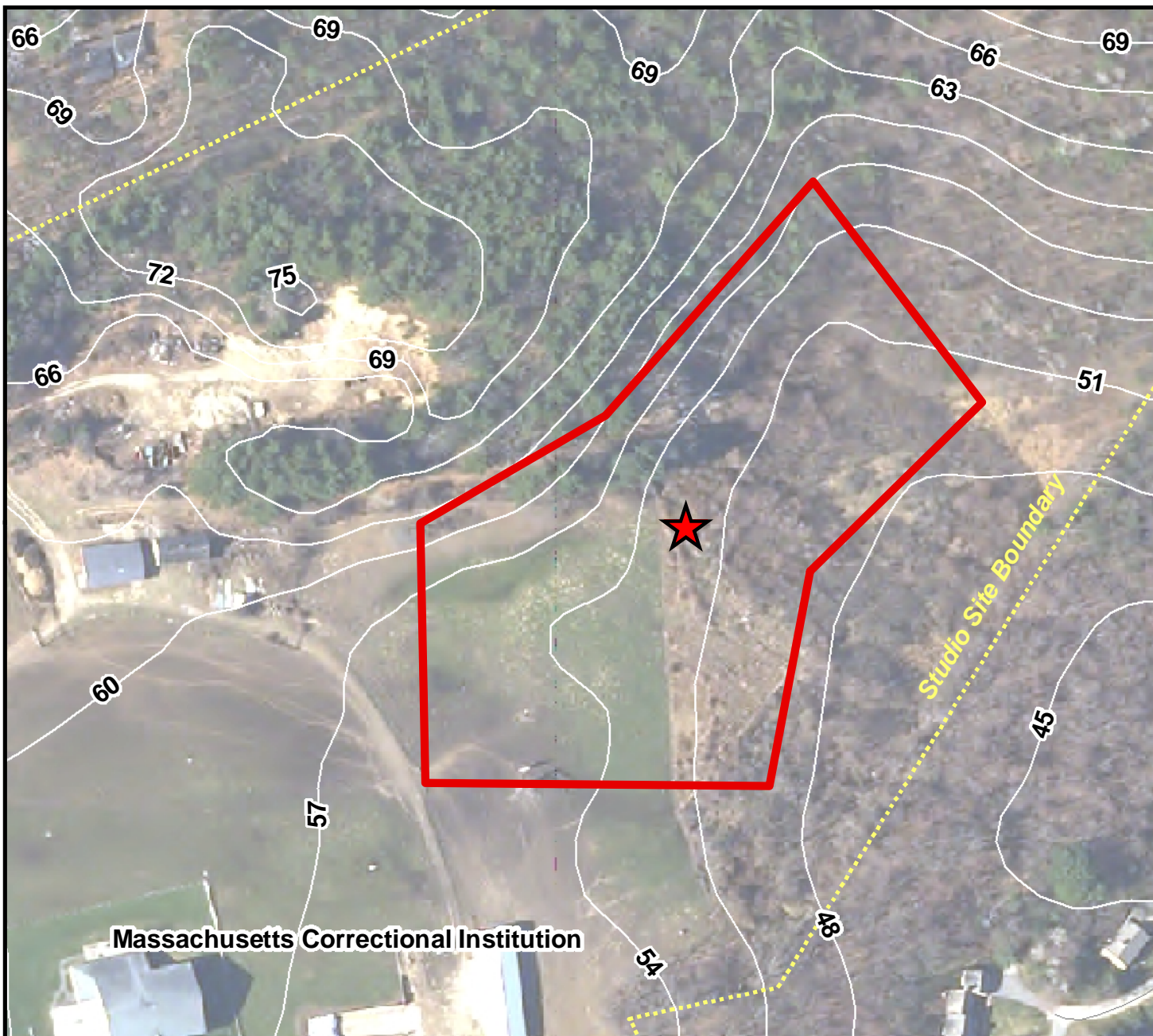


REVIEWED

By pbcote at 7:52 am, Oct 01, 2007

Sources:
2001 USGS Topographic Quadrangle Maps
2005 MassGIS Hydrography

Projection: Massachusetts State Plane Mainland

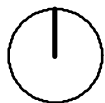
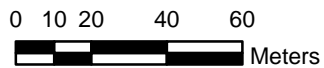


Terrain

The project site is approximately 2 Hectares surrounding a point assigned to me for this studio project. The site is located in the Massachusetts Correctional Institution (MCI) property at the edge of a field and forest and contains a wetland. The terrain elevation on the site is highest near MDC building, 75 meters, and drops to approximately 45 meters at bordering neighborhood. The project site is at the northern portion of the studio site boundary.

Jean-Paul Charboneau

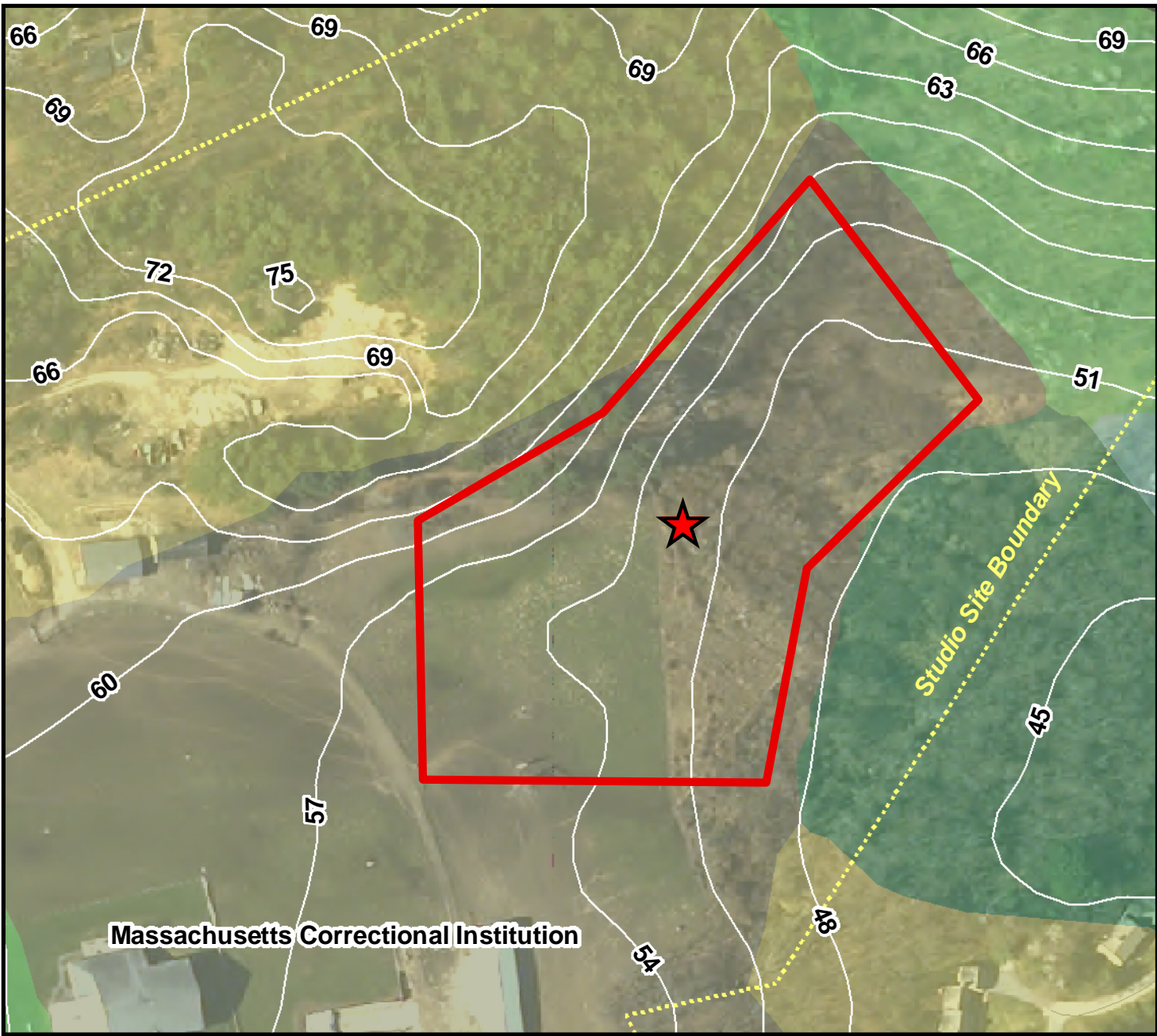
Mapping Assignment
 Planning and Design of Landscapes Studio
 Harvard Graduate School of Design
 September 2007



Sources:
 2005 Aerial Photo MassGIS
 Soils: Natural Resource Conservation Service 2007
 3 Meter Contours MassGIS

Projection: Massachusetts State Plane Mainland



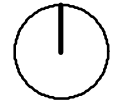


Site Soils

The project site is predominantly one soil type: Woodbridge Fine Sandy Loam. It is generally unsuitable for septic due to its slow infiltration rates.

Jean-Paul Charboneau

Mapping Assignment
 Planning and Design of Landscapes Studio
 Harvard Graduate School of Design
 September 2007



- Soil Type**
- CANTON FINE SANDY LOAM
 - HINCKLEY LOAMY SAND
 - PAXTON FINE SANDY LOAM
 - SWANSEA MUCK
 - WOODBRIDGE FINE SANDY LOAM

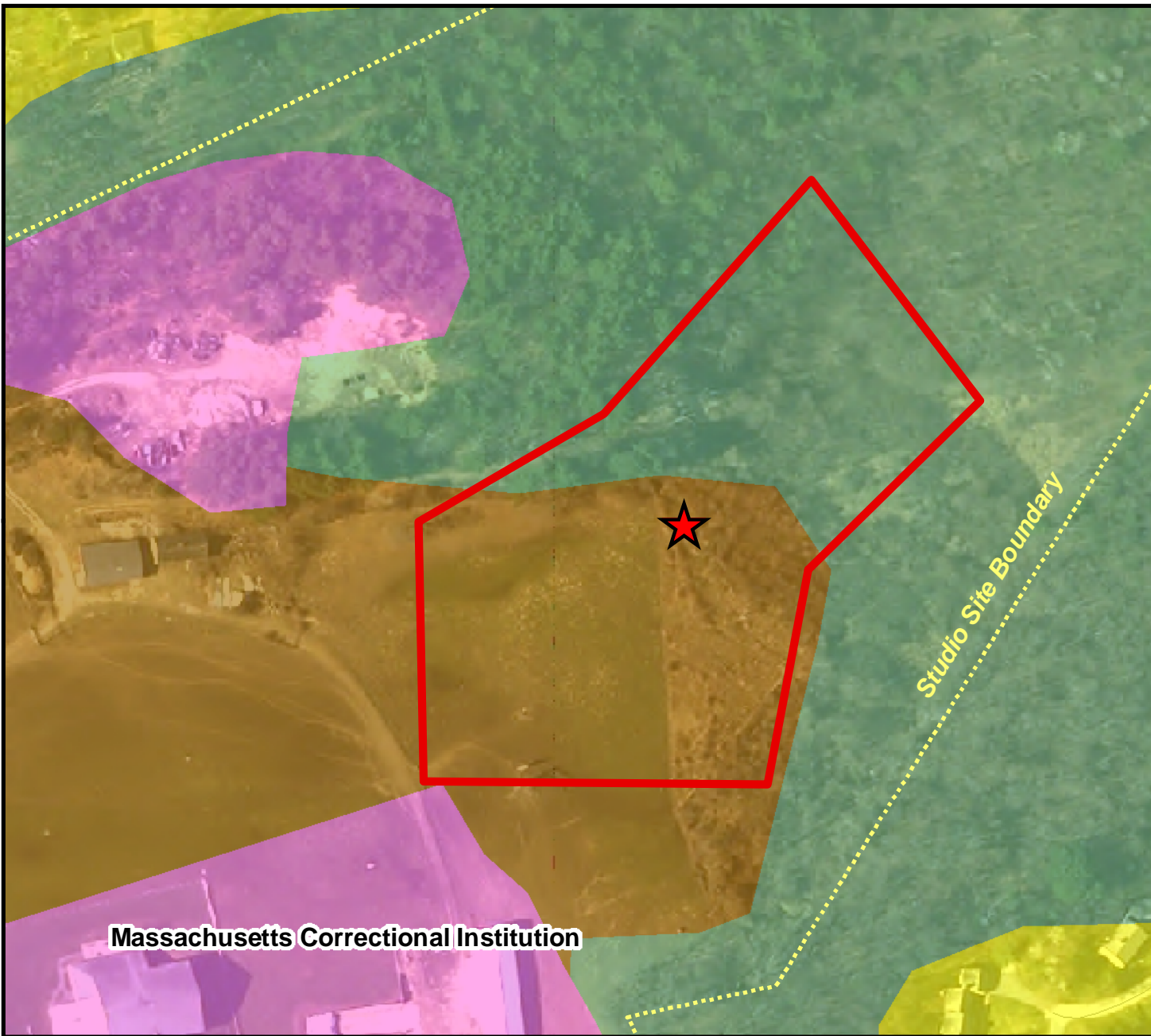


Sources:
 2005 Aerial Photo MassGIS
 Soils: Natural Resource Conservation Service 2007
 3 Meter Contours MassGIS

Projection: Massachusetts State Plane Mainland

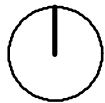
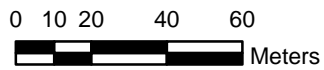
Land Use

The project site is split between forest and Massachusetts Correctional Institution (MCI) cropland. It is bordered by residential neighborhoods and the urban/public use of the MCI facilities.



Jean-Paul Charboneau

Mapping Assignment
Planning and Design of Landscapes Studio
Harvard Graduate School of Design
September 2007



Land Use (as of 1999)

- Cropland
- Forest
- Residential
- Urban Public

Sources:
2005 Aerial Photo MassGIS
Land Use MassGIS 1999
3 Meter Contours MassGIS

Projection: Massachusetts State Plane Mainland

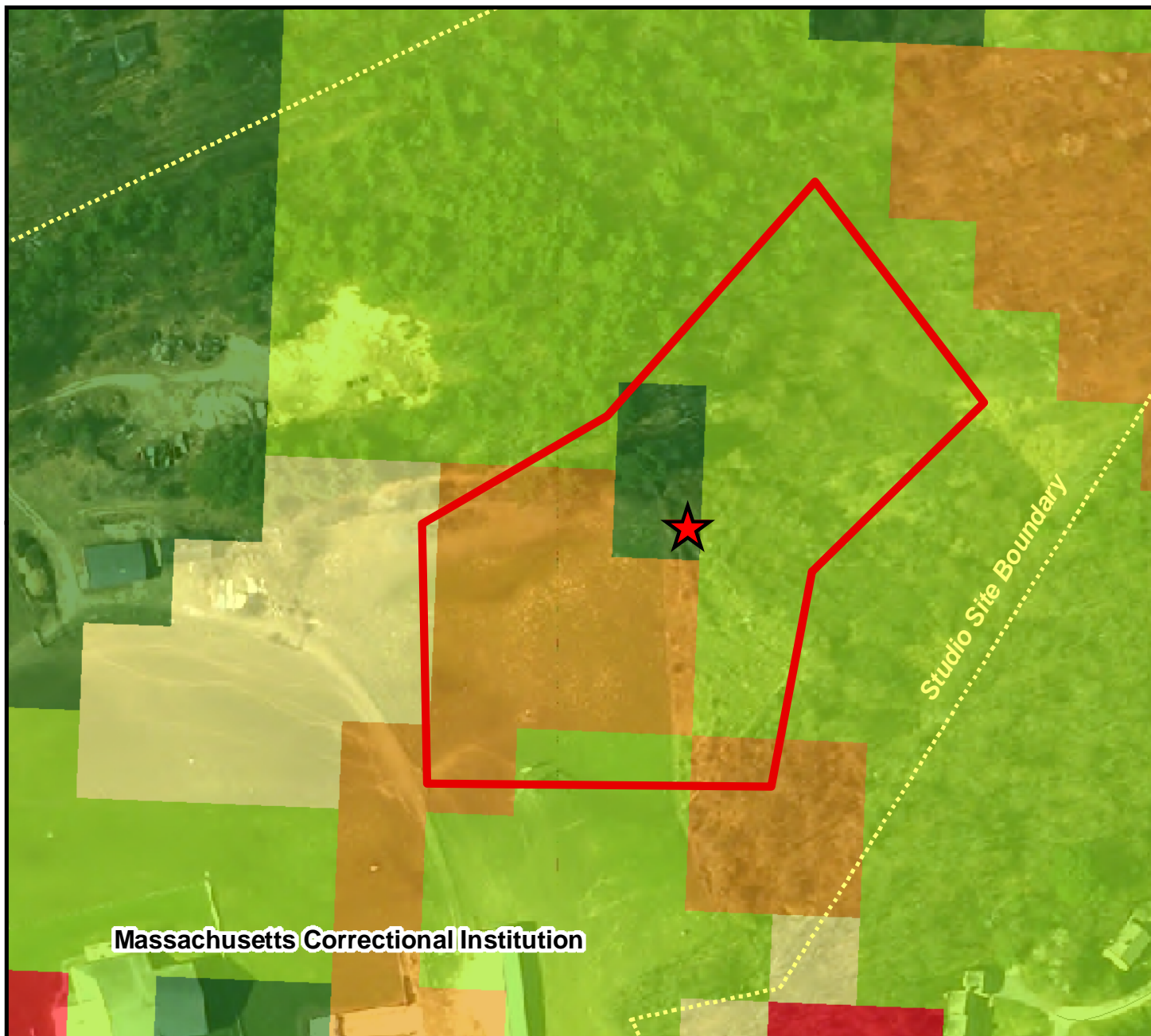
Vegetation

The project site, according to USGS GAP Analysis, consists of a small area of conifer and a slightly larger area of mixed red maple. The project site and the surrounding vegetation is predominantly oak dominant forest. However, the GAP Analysis incorrectly labels the grounds of the Massachusetts Correctional Institution as red maple dominant. A quick look at the satellite photo reveals that the area in question is, in fact, open fields.

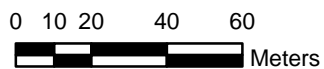


Jean-Paul Charboneau

Mapping Assignment
Planning and Design of Landscapes Studio
Harvard Graduate School of Design
September 2007



Massachusetts Correctional Institution



Vegetation

- Conifer Dominant
- Mining, Quarries, Landfills or Sand; Urban open land
- Oak Dominant
- Pasture, Grassland
- Red Maple Dominant

Sources:
2005 Aerial Photo MassGIS
USGS GAP Analysis, Department of Natural Resources Conservation 2003

Projection: Massachusetts State Plane Mainland